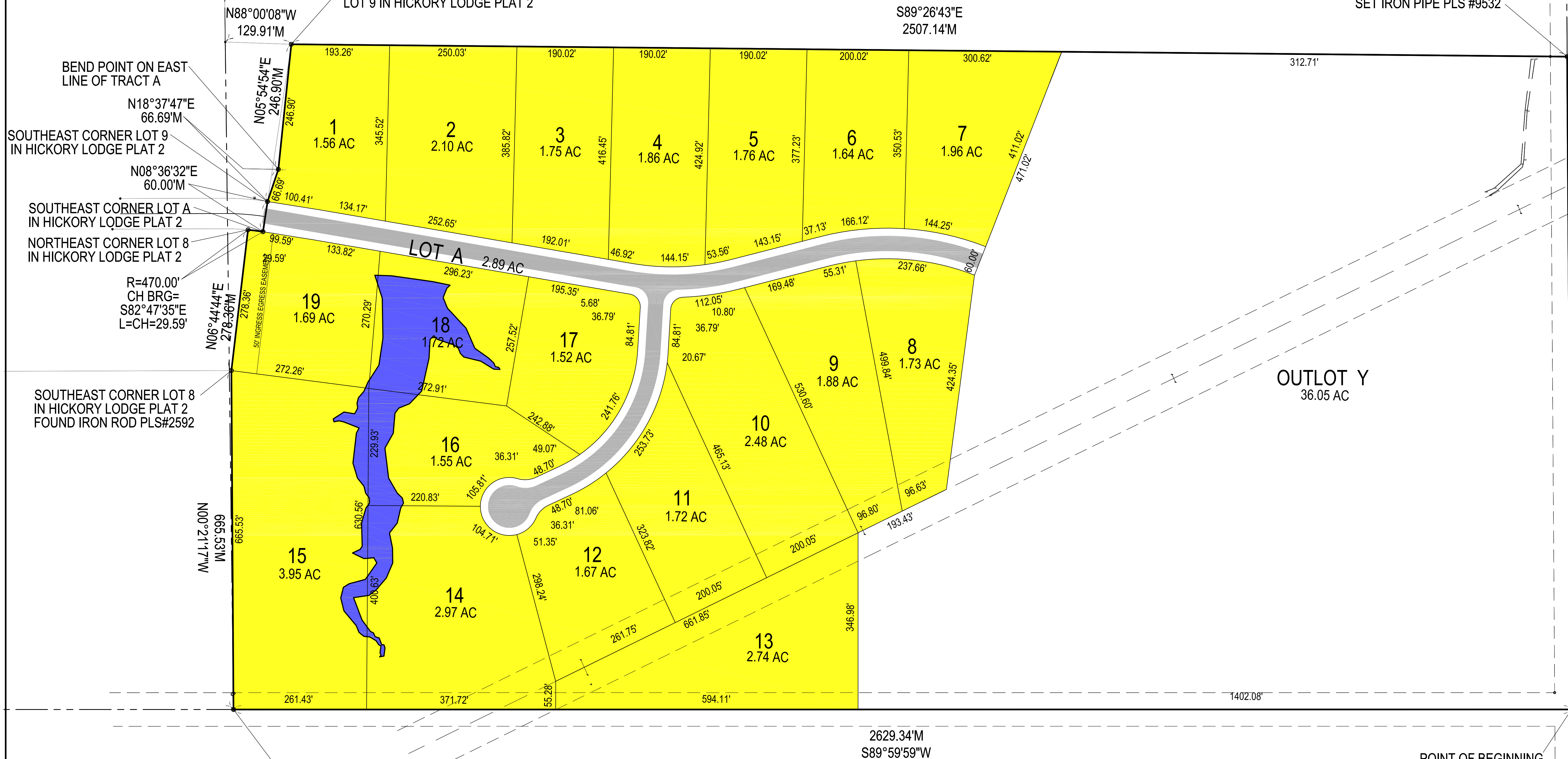


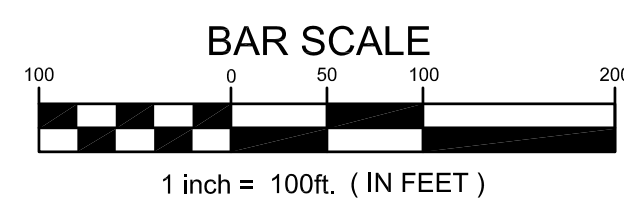
# FINAL PLAT OF HICKORY LODGE PLAT 4 DALLAS COUNTY, IOWA

NORTHEAST CORNER  
SOUTH 1/2 OF  
SECTION 36-78-27  
SET IRON PIPE PLS #9532

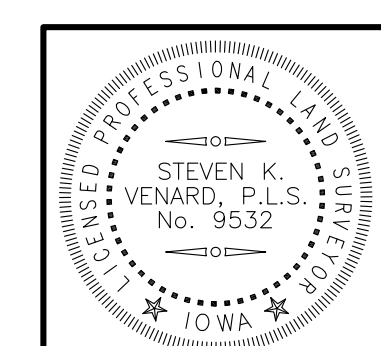


**SURVEY LEGEND:**

- SECTION CORNER- FOUND AS NOTED
- PROPERTY CORNER- FOUND IRON ROD PLS#7844 UNLESS OTHERWISE NOTED
- PROPERTY CORNER- PLACED 3/4" IRON PIPE WITH YELLOW PLASTIC CAP ID # 9532
- M MEASURED DISTANCE
- P PLATTED DISTANCE
- D DEEDED DISTANCE
- P.R.A. PREVIOUSLY RECORDED AS
- R.O.W. RIGHT-OF-WAY
- P.O.C. POINT OF COMMENCEMENT
- P.O.B. POINT OF BEGINNING



COPYRIGHT 2009 BISHOP ENGINEERING. THIS DOCUMENT AND THE INFORMATION CONTAINED MAY NOT BE REPRODUCED OR EXCERPTED FROM WITHOUT THE EXPRESS WRITTEN PERMISSION OF BISHOP ENGINEERING. UNAUTHORIZED COPYING OR DISCLOSURE OF CONSTRUCTION USE ARE PROHIBITED BY THE COPYRIGHT LAW.



I HEREBY CERTIFY THAT THIS LAND SURVEYING DOCUMENT WAS PREPARED AND THE RELATED SURVEY WORK WAS PERFORMED BY ME OR UNDER MY DIRECT PERSONAL SUPERVISION AND THAT I AM A DULY LICENSED PROFESSIONAL LAND SURVEYOR UNDER THE LAWS OF THE STATE OF IOWA.

SIGNED: STEVEN K. VENARD L.S. 9532 DATE: \_\_\_\_\_  
 LICENSE RENEWAL DATE: DEC. 31, 2013  
 PAGES OR SHEETS COVERED BY THIS SEAL: \_\_\_\_\_

**Bishop Engineering**  
 "Planning Your Successful Development"

3501 104th Street  
 Des Moines, Iowa 50322-3825  
 Phone: (515)276-0467 Fax: (515)276-0217  
 Civil Engineering & Land Surveying Established 1959

HICKORY LODGE PLAT 4  
 DALLAS COUNTY, IOWA

**FINAL PLAT**

REFERENCE NUMBER:	
DRAWN BY:	SKV
CHECKED BY:	
REVISION DATE:	
PROJECT NUMBER:	130512
SHEET NUMBER:	1 OF 1

M:\Land Projects\2007\Bishop\_Eng\Standards\_Setup\dwg\PRELIMINARY PLAT.dwg 1/10/2013 6:35:29 AM CST